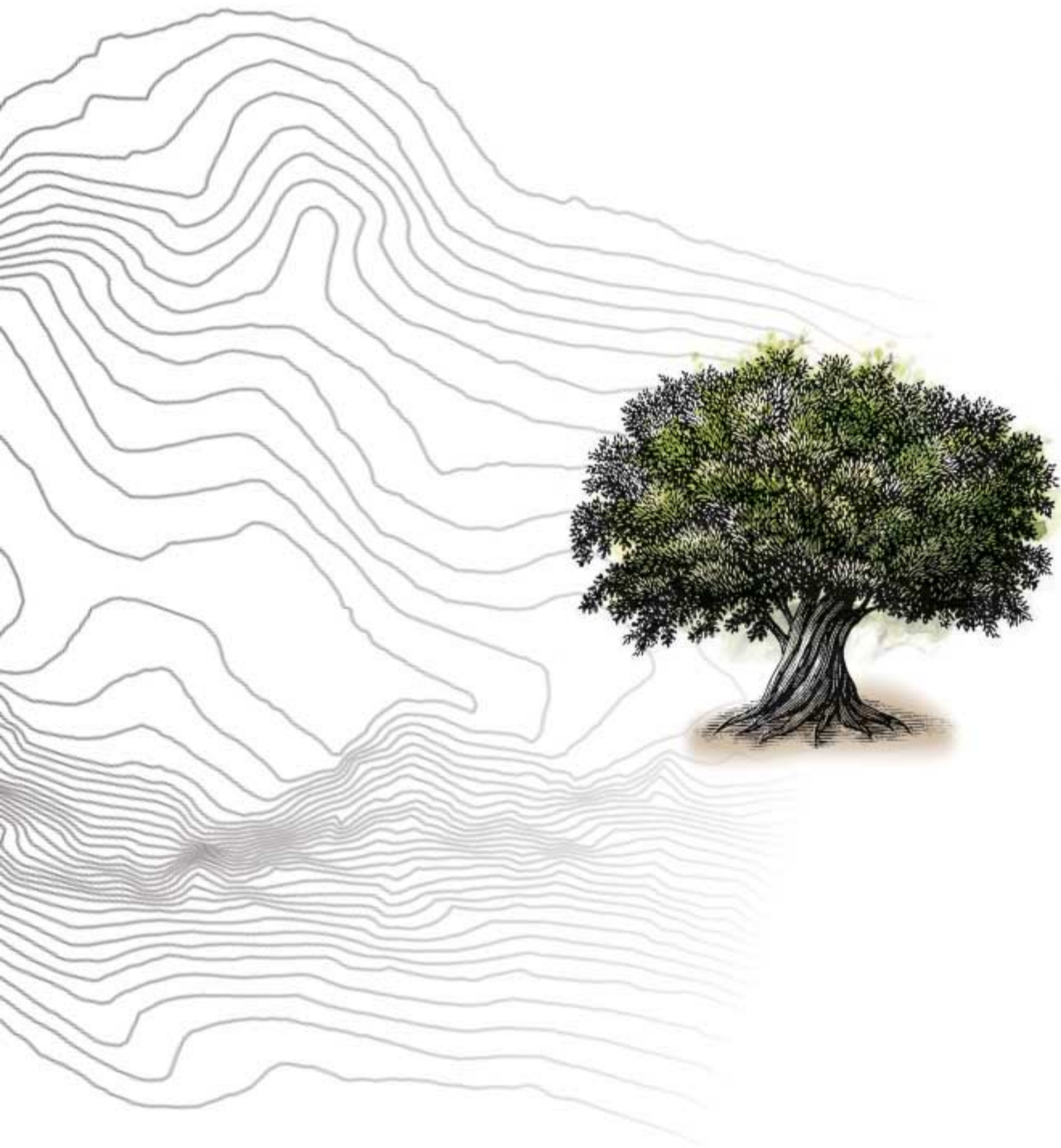




46 BANYAN TREE





Welcome to 46 Banyan Tree


Carved to life by one of New Zealand's renowned architect, 46 Banyan Tree, is situated at Chandkhed near Hinjewadi, on a proposed 200ft wide state highway which connects Hinjewadi to the Mumbai-Pune expressway. 46 Banyan Tree, a Gated community has Residential NA Villa Plots ranging from 4000-6000 sqft. that forms a truly sustainable and modern human habitat. Spread across 46 Acres, the project boasts of a large central open space with a club house, dedicated outdoor meditation and yoga centre, an amphitheatre, relaxing walkways and jogging track, fun zone for kids, comforting area for senior citizens and a swimming pool,

You just have to be here to feel it.





BACK TO ROOTS



Bringing back the melody of birds chirping, warmth of sunlight gleaming, beauty of bloomed flowers.

So, they're still around for your children and generations to follow.

46 BANYAN TREE, A WELL THOUGHT MEGA-PROJECT, SHOWCASING TRUE WORTH OF LIVING IN NATURE'S PARADISE WITH ALL THE AMENITIES AND LUXURIES YOUR GRAND PRESENCE DESERVES.



The design of the entire project is based on conserving natural resources in the form of planting fruit trees, drip irrigation systems, organic farming and many more to discover a place where we welcome the homecoming of natural habitat for the generations to come.





BACK TO LIFE



Gone are those days when maintaining an active healthy lifestyle was difficult.

Imagine a home that is pure indulgence of health and comfort.

IMMACULATELY PLANNED WITH MODERN LIVING DEMANDS, 46 BANYAN TREE IS INTEGRATED WITH A DIVERSE MIX OF FITNESS AND RECREATIONAL FACILITIES.

Lifestyle activities like dedicated Yoga and Meditation zone, Indoor gym, Swimming pool, Multipurpose Sports court, Jogging track and Lawn games are few of the amenities specially designed to release all your mental setbacks and calm your soul.



BACK TO COMFORT



Bringing back the excitement and amusement of being socially connected, with bursts of laughter rolling all around and comforting silence of inner joy.

Experience it with Community Living.

THE RESIDENTIAL GATED COMMUNITY LIVING SET AT 46 BANYAN TREE AIMS TO BRING EVERYONE TOGETHER TO EXPERIENCE A SENSE OF SECURITY, HARMONY AND AFFECTION.

The framework of the entire project is based on an approach of bringing back people to reside in a socially active natural habitat within a fully secured Gated community, Open spaces, Clubhouse, Piazza with Barbeque stations, Water and Electricity provision. Everything ensures your living is not a compromise at any point.





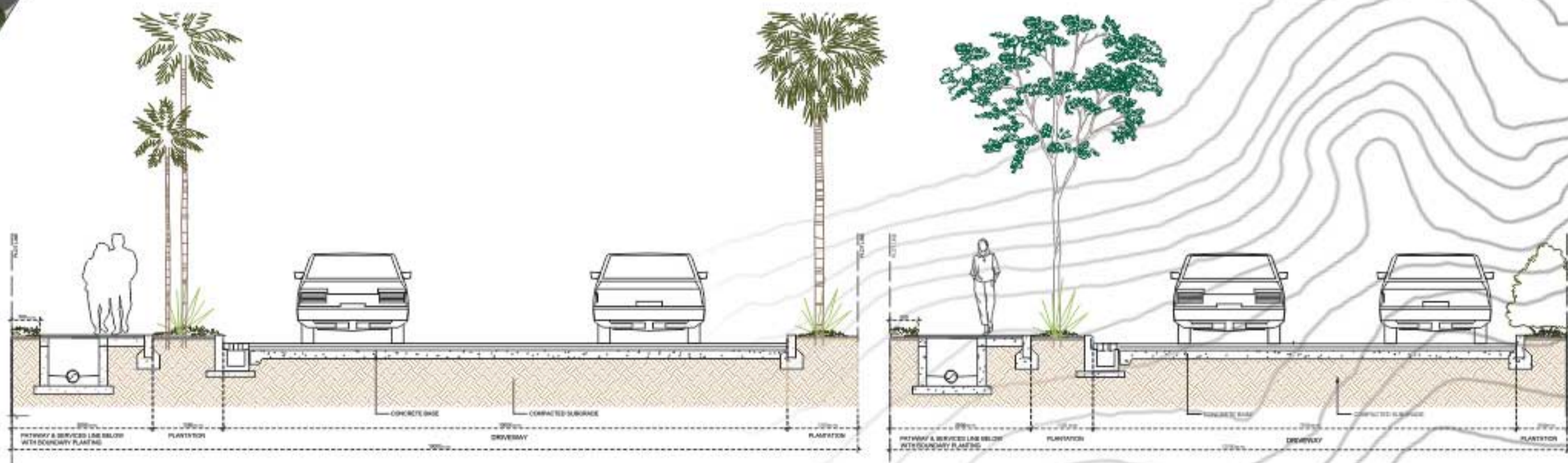
Phase I

Phase II

ENTRY
36mtr wide

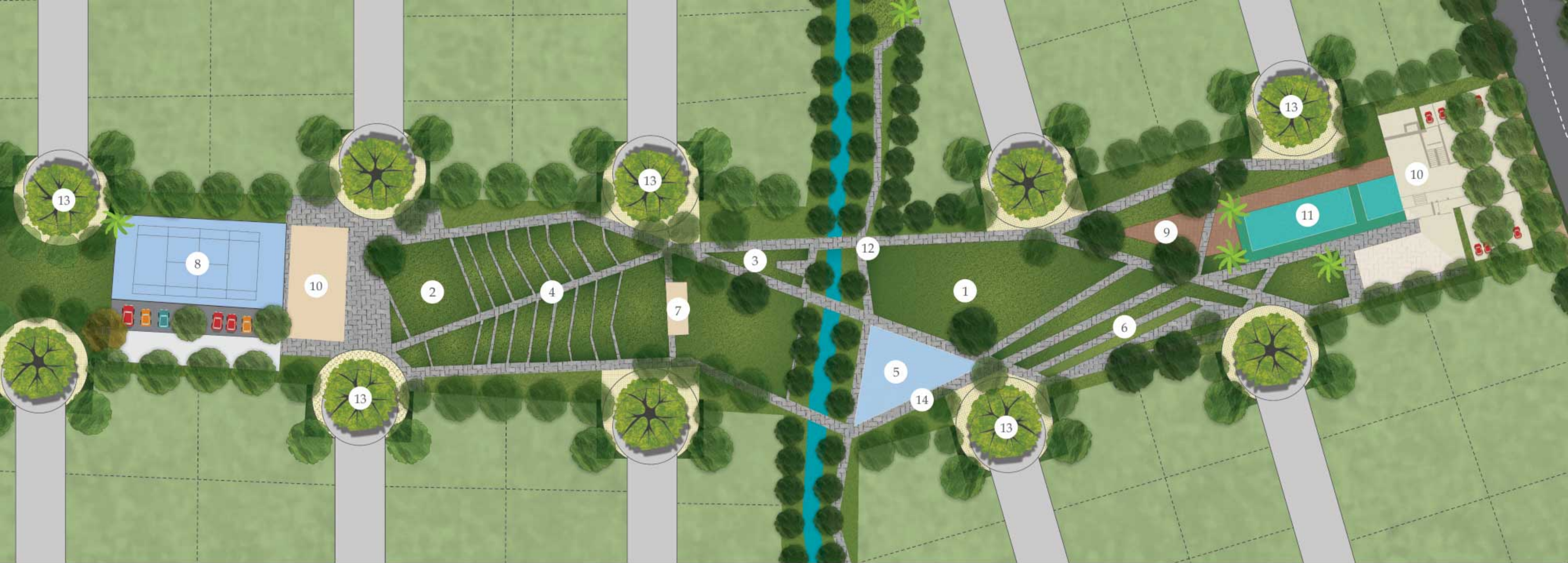
MASTER PLAN

- a. Entrance Area
- b. Central Open space
- c. Internal Road 15m wide
- d. Internal Road 12m wide
- e. Internal Road 09m wide



15 M WIDE ROAD

12 M WIDE ROAD



CENTRAL OPEN SPACE

- | | | | |
|--|--|---|--|
| 1 Lawn Terraces | 6 Senior's Citizen Area with Accu-pressure Path | 10 Two Club House with Guest Rooms, Indoor Gym, Indoor Games, Society Office, Study Area, Library, Indoor Multipurpose Hall | 13 Piazza acting as Courtyard Spaces 10 in number with Barbeque Stations, Seating Areas and Interactive Spaces:
>Chess >Hopscotch >Scrabble
>Side Walk Chalk Game >Twister |
| 2 Party Lawn | 7 Pavilion with Stage Acting as a Transition Space with Foldable Outdoor Movie Screen | 11 Swimming Pool for Adult's and Kid's with Deck Area | 14 Cycle Track |
| 3 Lawn Games like Croquet, Horseshoe, Bean Toss, Ladder Golf, Cornhole | 8 Multipurpose Court for Basketball, Volleyball, Tennis, Badminton, Cricket Pitch Markings | 12 Connecting Plaza Spaces | |
| 4 Amphitheatre | 9 Yoga and Meditation Zone | | |
| 5 Vehicle free Kid's Play Zone | | | |



CENTRAL OPEN SPACE



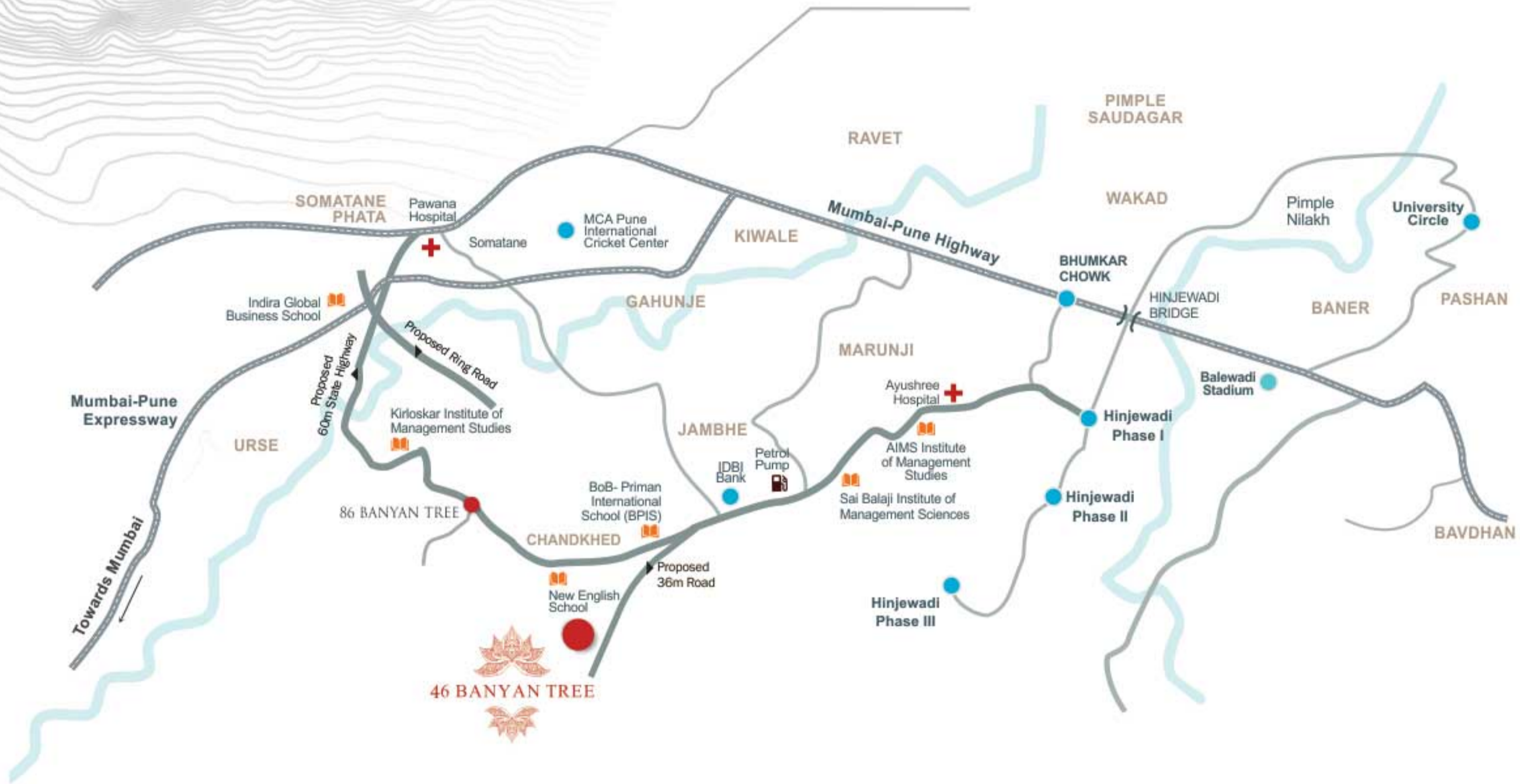
- Amphitheatre
- Kid's Play Zone
- Towards Amphitheatre
- Yoga and Meditation Zone

CLUB HOUSE

The clubhouse gives special impetus to 46 Banyan Tree to let you embark on a soulful journey. It has multiple sports and recreational activities which let you enjoy and cherish the happy side of life, every day.



LOCATION MAP



Connectivity

- **Mumbai-Pune Expressway**
8 Kms away
- **Wakad**
13 Kms away
- **IT Park Hinjewadi**
12 Kms away
- **University Circle**
25 Kms away
- **Somatane Phata**
12 Kms away

- Landmarks
- 🏫 Schools / Universities
- ✚ Hospitals

+ Hospitals

- Pawana Hospital
- Ayushree Hospital

🏫 Schools / Universities

- BoB- Priman International School (BPIS)
- New English School
- Sai Balaji Institute of Management Sciences
- Kirloskar Institute of Management Studies
- Indira Global Business School
- AIMS Institute of Management Studies

PROJECT BY:



Banyan Tree Realty

Site Address :

46 Banyan tree
Gat no 135, 136, 137
Pachane Road Chandkhed,
Taluka Maval.
Pune - 410506

☎ **+91-7026996600**

✉ **sales@banyantreerealty.in**

🌐 **46banyantree.in**

Office Address :

102, Kalindi Apartments,
Behind Hotel Ambassador,
318/19 Chaturshringi Road,
Pune -411 016

☎ **+91-02-2565 1953**

✉ **info@banyantreerealty.in**

🌐 **banyantreerealty.in**



RERA NO. P52100018777

DISCLAIMER

The content and communication is purely conceptual. The pictures, images are representative purposes only. The areas, prices, elevation, and visual are proposed and indicative. The company reserves the right to change the design, elevation, specification without prior notice and obligation. The areas, prices, elevations and specifications in the agreement shall be final and binding. This advertisement does not constitute any form of the offer; the purchaser is governed by T&C's of Agreement. This is a limited period offer and applicable on first come first serve basis. The company reserves the right to alter, discontinue price at any time. Booking is subject to confirmation of T&Cs.